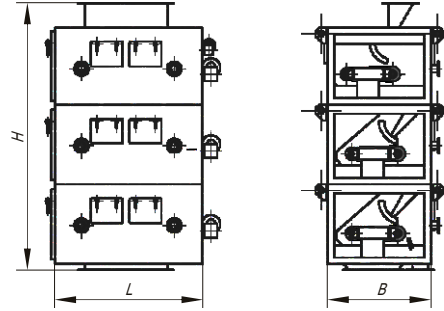




Roller Magnetic Separators RS



Designed for high-efficiency dry magnetic separation of nonmetallic materials (quartz sands, pegmatite, feldspar, abrasives, refractory materials, etc.).

Applied in mining, glass, ceramics, refractory materials industries, etc.

Name	Maximal productivity,* t/h	Quantity of magnetic rollers, pcs.	Length of operation area, mm	Magnetic induction on the operation surface, T	Dimensions, mm			Weight, kg	
					L	B	H		
RS-12/10	0,5	1	100	1,4	750	850	916	280	
RS-12/50	2,0		500		1250		400		
RS-12/100	4,0		1000		1750		864	600	
RS-12/150	6,0		1500		2250		800		
RS-22/100	6,0	2	1000	0,9/1,4	1910	1012	1010	1200	
RS-22/150	9,0		1500		2410		1500		
RS-22/200	12,0		2000		2910		1900		
2RS-12/10	1,0	2	100	0,9/1,4	750	850	1490	600	
2RS-12/50	3,0		500		1390		885		
2RS-12/100	6,0		1000		1750		1250		
2RS-12/150	9,0		1500		2250		1500		
2RS-12-22/100	8,0		1000		1910		1012	1770	1300
2RS-12-22/150	12,0		1500		2410		2300		
3RS-12-22-22/50	8,0	3	500	0,7/1,2/1,4	1390	1170	2485	1600	
3PC-12-22-22/100	16,0		1000		1890		2200		
3RS-12/150	9,0		1500		2250		850	2280	2300
3RS-12-22-22/150	20,0		1500		2410		1170	2485	3800

- * For quartz sand with fraction - 0.8 +0.1 mm and humidity up to 0.5 %.
- Material operation temperature is up to 150 °C.
- Optional separators can be equipped with special aspiration system for improve the efficiency of the magnetic separation of quartz sand.
- Manufacturing of separators accounting for customer's requirements is available.

