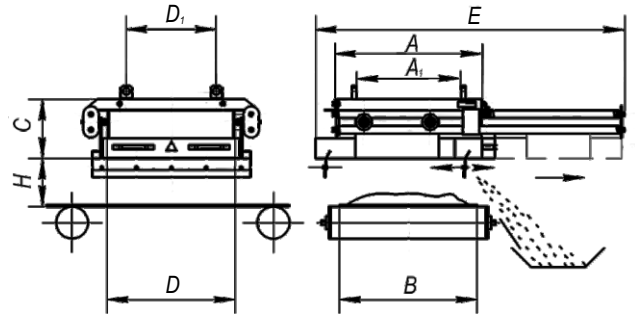




Plate Magnetic Separators PN-M



Designed for extracting ferro magnetic impurities and random metal particles (bolts, screws, etc) from dry materials that are moved by the belt-type conveyor.

Installed at the distance of 100-350 mm above the conveyor belt, depending on the height of material layer.

Name	Width of conveyor belt, B, mm	Height of hanger, H, mm	Dimensions, mm						Weight, kg			
			A	D	C	E	A ₁	D ₁				
PN-M - 40/43	400	150	416	440	128	980	320	290	120			
PN-M - 40/64		200		654	194			510	280			
PN-M - 50/43	500	150		440	128			290	120			
PN-M - 50/64		200		654	194			510	260			
PN-M - 65/43	650	150	553	440	128	1186	450	290	170			
PN-M - 65/64		200		640	194			510	380			
PN-M - 65/85		250		868	246			730	560			
PN-M - 80/64	800	200		690	654			194	1441	590	510	420
PN-M - 80/85		250			868			246			730	690
PN-M - 100/64	1000	200			827			654			194	1647
PN-M - 100/85		250	868			246	730	840				
PN-M - 120/85	1200	250	964	868		246	1902	860	730	860		

1. Maximum induction on separator's operating surface is according to technical specification.
2. Speed of conveyor belt is not more than 2 m/s.
3. Manufacturing of separators accounting for customer's requirements is available.

