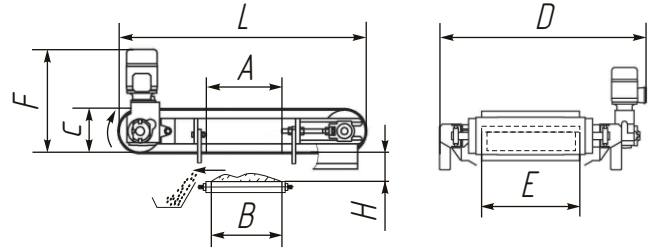




Plate Magnetic Separators PN-A



Designed for extracting ferro magnetic impurities and random metal particles (bolts, screws, etc) from dry materials that are moved by the belt-type conveyor.

Installed at the distance of 100-350 mm above the conveyor belt, depending on the height of material layer.

Name	Width of conveyor belt, B, mm	Height of hanger, H, mm	Dimensions, mm						Drive power, kW	Weight, kg			
			A	E	L	C	D	F					
PN-A - 40/43	400	150	410	430	1610	240	1100	650	1,5	250			
PN-A - 40/64		200		640						1310	450		
PN-A - 50/43	500	150	550	430	1750	240	1100	650	2,2	350			
PN-A - 50/64		200		640						1310	600		
PN-A - 65/43	650	150	550	430	1750	240	1100	650	2,2	300			
PN-A - 65/64		200		640						1310	560		
PN-A - 65/85		250		850						1850	374	1700	900
PN-A - 80/64	800	200	690	640	1900	240	1310	830	3,0	700			
PN-A - 80/85		250		850						1700	1200		
PN-A - 80/106		300		1060						2000	374	1950	1700
PN-A - 100/64	1000	200	830	640	2050	240	1310	860	3,0	850			
PN-A - 100/85		250		850						2130	374	1700	1350
PN-A - 100/106		300		1060						2250	424	1950	2300
PN-A - 100/127		350		1270						2250	424	2160	2600
PN-A - 120/85	1200	250	970	850	2270	374	1700	890	4,0	1500			
PN-A - 120/106		300		1060						2370	1950	2300	
PN-A - 120/127		350		1270						424	2160	3100	
PN-A - 140/106	1400	300	1250	1060	2650	424	2000	890	4,0	3000			
PN-A - 140/127		350		1270						2160	3700		

1. Maximum induction on separator's operating surface is according to technical specification.
2. Speed of conveyor belt is not more than 2 m/s.
3. Manufacturing of separators accounting for customer's requirements is available.

