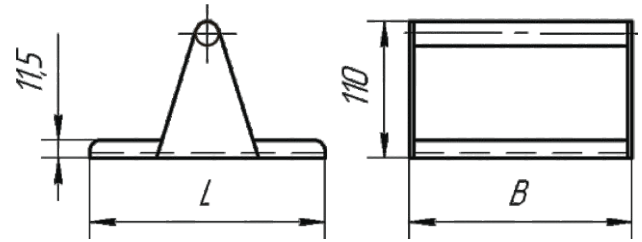




## Plate Magnetic Separators PPM



Designed for extracting ferro magnetic impurities from liquid mixtures and suspensions.

Installed on trays of product supply at the enterprises of ceramics, porcelain and faience and other productions.

Name	Dimensions, mm		Weight, kg, not more
	L	B	
PPM - 8,5/22 - N	220	85	1,5
PPM - 8,5/24,5 - N	245		1,6
PPM - 8,5/27 - N	270		1,8
PPM - 8,5/29,5 - N	295		1,9
PPM - 8,5/32 - N	320		2,1
PPM - 11/22 - N	220	110	1,9
PPM - 11/24,5 - N	245		2,1
PPM - 11/27 - N	270		2,3
PPM - 11/29,5 - N	295		2,5
PPM - 11/32 - N	320		2,7
PPM - 14/22 - N	220	140	2,4
PPM - 14/24,5 - N	245		2,7
PPM - 14/27 - N	270		2,9
PPM - 14/29,5 - N	295		3,2
PPM - 14/32 - N	320		3,5
PPM - 16,5/22 - N	220	165	2,8
PPM - 16,5/24,5 - N	245		3,2
PPM - 16,5/27 - N	270		3,5
PPM - 16,5/29,5 - N	295		3,8
PPM - 16,5/32 - N	320		4,1
PPM - 19,5/12 - N	120	195	1,8
PPM - 19,5/14,5 - N	145		2,2
PPM - 19,5/17 - N	170		2,6
PPM - 19,5/19,5 - N	195		2,9
PPM - 19,5/22 - N	220		3,3
PPM - 19,5/24,5 - N	245		3,7
PPM - 19,5/27 - N	270		4,1
PPM - 19,5/29,5 - N	295		4,5
PPM - 19,5/32 - N	320		4,9

1. Maximum induction on the magnetic block's surface is not less than 350 mT.
2. Manufacturing of separators accounting for customer's requirements is available.

